



Learning for life!

Meridian Newsletter

Term 4

**Monday 20th February to
Friday 31st March**

Term 5

**Monday 17th April to Friday
26th May**

www.meridianschool.co.uk



**Meridian Community Primary
School and Nursery**



@MeridianCPS

**Friday
24th
March
2023**

Dear Parents and Carers

I hope you are all well and are looking forward to the Easter Holidays. Don't forget the clocks go forward this weekend!

Comic Relief

Last Friday saw us all wearing something red in recognition of Comic Relief charity day. Thank you to everyone that took part and for sending in donations. We raised an amazing £319 to this wonderful cause!

Welcome Back!

We are looking forward to welcoming Mrs. Passingham-Smith back to school next as she returns from her maternity leave. She will be teaching 2½ days a week for the rest of the summer term. Her main teaching role will be class sharing with Mr. Barcock so that the children in 5B will be taught by her on Wednesdays and Thursdays when Mr. Barcock has his leadership time. A huge thank you to Miss. Jones who has been teaching the class since on these days since January.

Specialist Facility

Following a recent consultation, we are on track for opening a Specialist Autistic Facility at Meridian. This facility will cater for 8 children who have got EHCPs with a primary diagnosis of autism and a recommendation placement for a facility provision. We are hopeful that we will be able to open this facility in the new academic year and the whole team are excited about welcoming new children to our school. I have been campaigning for a while now about the lack of specialist SEND provision across Peacehaven and Newhaven and hopefully this will Facility will support the needs of our local community. More information will be shared over the coming months.

I hope you have a lovely weekend and I am looking forward to seeing all the children next week for the last week of term! 😊

Take care and best wishes

C. Westcott

Claire Westcott
Headteacher

strength

kindness

respect

honesty

responsibility



TERM DATES 2022/2023

Term 4

Monday 20th February – Friday 31st March

Term 5

Monday 17th April – Friday 26th May

01.05 – School closed for May Bank Holiday

08.05 – School closed for King's Coronation Bank Holiday

Term 6

Monday 5th June – Friday 21st July

05.06 – School closed for staff training day (INSET day)

IMPORTANT DATES

31.03 End of term 4

28.04 PTFA Social Event TBC

01.05 School Closed for May Bank Holiday

05.05 Kings Coronation Celebration Day – more details to follow soon

08.05 School Closed for Bank Holiday for King's Coronation

09.05 KS2 SATs start

12.05 PTFA Disco

R, Y1, Y2: 4.15pm – 5.15pm

Y3, Y4, Y5, Y6: 5.45pm – 7.00pm

23.05 Sports Day KS2 (AM) and Reception/KS1 (PM)

25.05 Reserve Sports Day

26.05 Nursery Sports Day (AM)

26.05 End of term 5

05.06 School Closed for Staff Training

05.06 Year 4 Multiplication Times table Check Week

12.06 Phonics Screening Week

26.06 Year 6 go to PGL

30.06 Year 6 return from PGL

07.07 PTFA Summer Sizzler

21.07 End of term 6

Dates for our end of year musical performances to be confirmed after Easter!

Safeguarding at Meridian

If you have a safeguarding concern about a child that attends Meridian, please do contact one of the Designated Safeguarding Leads:

Miss. Laura Miles

Designated Safeguarding Lead

Ms. Claire Westcott

Deputy Designated Safeguarding Lead

Mr. Matt Doody

Deputy Designated Safeguarding Lead

You can also call Single Point of Advice (SPOA) on 01323 464222

If you have an immediate or emergency concern about a child's safety, please call 999. The NSPCC has advice about this on their website [here](https://www.nspcc.org.uk).

NHS
East Sussex
School Health Service

Aged 11 to 19?

Or parent/carer of a child or young person aged 5 to 19 years old?

Speak to a school nurse in person.

Tuesdays and Thursdays
10am to 3pm
and 6 to 9pm

Click <https://nhs.uk/east-sussex-school-health>
or text
07507 332473 anytime.

**East Sussex
School Health**

**Confidential, private
and here for you.**

Parent Forum

Our next Parent Forum will be on Wednesday 3rd May at 2pm in our Forest School Area!

If you would like to come along and find out about our wonderful Forest School Curriculum and meet Mr. Legate, please come along on this day.

This will be subject to the weather and may have to be cancelled last minute if pouring with rain!

Contact Details

Please inform the school office of any changes in contact details (address, mobile number, email)

This is really important in case we need to contact you in an emergency.

Car Park

Gates

You may have noticed how temperamental our main gates in to the car park are! I am in ongoing discussions with EMCOR about this matter and hopefully things will be resolved once and for all very soon. Please could you help the school by not using the main car park gates to walk through if you see that they are open as the sensor to close the gates can get stuck easily if they have to stop suddenly when someone walks through them.



Pathways

Please be aware that if you choose to walk through the car park rather than on the path, you are risking yourself and your child's safety should a vehicle enter the car park during drop off and pick up. We advise you to use the pathway in order to keep everyone safe. Please note we will not accept responsibility for any accidents or injuries if you are walking through our car park rather than on the pathway.

Staff Vehicles

Please can you ensure that you do not let your children run around and between the cars in the car park. This is not safe for your children but staff vehicles could potentially get damaged, for which you would be liable.

Staff and Visitors only please!

Thank you to everyone for supporting the school by not trying to access the car park, particularly when the weather is not great. Please do not be offended if you are not given access to the car park should you request it.



Online Safety

Supporting the children to keep safe online continues to be a priority of the school. We are keen to support parents with our new app and online safety resources. Please do visit our [Online Safety](#) page on our website for more information and links to great ideas about how to support children at home!

Year 3 Swimming

We are really sorry that we were not able to rebook Year 3 swimming lessons this term – we tried our best but were not able to do this. The children will go swimming again in Year 4 and we will look to see if we can book extra lessons if possible but we cannot guarantee this. Thank you for your understanding.

Good Attendance means...

Being in school at least 97% of the time or 184 to 190 days

Remember

Your education is important - don't miss out!

Did you know?

A two week holiday in term time means that the highest attendance a child can achieve is 94.7%



There are **365** days in a calendar year

175 days are **not** spent at school*

*So there's plenty of time for shopping, holidays and appointments!

Did you know?

When pupils attend school they:

- ✓ Can achieve their full potential
- ✓ Have better career prospects
- ✓ Learn how to look after themselves and be healthy
- ✓ Grow in confidence
- ✓ Keep up with work and homework
- ✓ Make new friends

Well done to RT for having the highest attendance so far this term at **96.6% - AMAZING!**

Our **whole school** attendance is currently very low at **93.0%** but hopefully as the weather improves and the coughs and colds disappear, our attendance will improve too

Please help us to ensure that your child has good attendance

Loose Parts

Keep those donations coming in for our OPAL playtimes! **All donations will be safety checked by the staff to ensure suitability for the children to use.** Here are suggestions of what we will be asking for:

Cardboard boxes

Cuddly Toys

Fabrics - all shapes and sizes

Metal pots, pans, trays etc. Especially catering sizes

Old clothes, jackets, overalls, hats, bags

Old household appliances, hoovers, fax machines, microwaves etc

Phones

Small Children's Bike Wheels, wheels

Sofa and chair cushions

Suitcases - all sizes

Tubes of all kinds

Carpet samples

Carpet squares

Guttering

Hoses

Brief cases

Buggies, push chairs



So if you are having a clear out, please think of us! The donation areas are by the entrances to the school gates – please put your items in there ready for our safety inspection.

Our wonderful playtimes!

It was too wet to get many photos this week! So here are some taken back in February showing lots of smiling faces during our playtimes. Hopefully the sun will be out after Easter holidays where we can take lots more!



Please keep those donations coming in – the children really love exploring and getting creative with new things!

Governor news!

The Governing board has recognised the importance of ensuring parents and carers know who we are and what we do. We will aim to provide an update each term as part of the school newsletter – here is our first update!

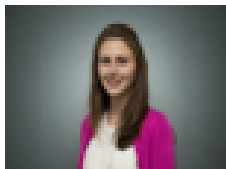
Who are we?

As this is the first update, we'd like to let you know who the Governors are:

Current Governors:

Miss Ellen Hales (Staff Governor)
Mr Edward Dunn (Co-opted governor)
Mrs Lisa Gendre (Parent Governor)
Miss Kathryn Donkin (Co-opted Governor) Chair
Dr Joel Chilaka (Co-opted Governor) Co-Vice Chair
Mrs Janet Anthony (Co-opted Governor)
Mrs Nicky Packham (Parent Governor) Co-Vice Chair
Dr Hannah Wood (Co-opted Governor)
Mrs Sue Porter (Local Authority Governor)
Ms Claire Westcott (Staff – Headteacher) Ex-Officio Governor

We currently have 2 governor vacancies. We are looking for skilled and enthusiastic volunteers such as retired Police Officers, Nurses, Councilors, Teachers to join the Governing Board!



Meet Kathryn Donkin, who has been chair of Governors since 2022:
I became a governor at Meridian in January 2019 as I was keen to be involved with helping the school continue the hard work they have achieved so far. The governing body has a diverse skill set and work hard to ensure we support the school achieve its ambitions. I particularly enjoy coming into school and hearing about the work the children are doing - their artwork is always particularly impressive.

What do we do?

As governors we are responsible for the vision and strategic direction of Meridian. We hold the headteacher to account for how well pupils achieve and progress educationally, and for the quality of teaching. We also oversee how the school spends its money, making sure the school stays within budget and that monies are well spent. The Full Governing Body (FGB) meets about 10 times per year and there is also a Pay Committee which meets once per year. All minutes of our meetings can be found on the school website along with other details about us – so please do have a look!

[Meridian Community Primary School & Nursery - Governors \(meridianschool.co.uk\)](https://meridianschool.co.uk)

What have we been up to recently?

The Governing body hit the ground running in September 2022, welcoming some new (Ellen Hales) and experienced (Ed Dunn) faces to the team. Since then, we have had interesting presentations from various subject leaders at our FGB meetings (PSHE, Music and Phonics). These sessions provide an in-depth opportunity for Governors to understand and ask questions about the logic and planning that goes into delivering the best education for pupils at Meridian. It has been clear from all presentations so far, the passion and enthusiasm that teachers have across all subjects.

Governors have also been into school for various monitoring visits, allowing us to see for ourselves the Meridian approach in action. We have observed the school across many areas including Safeguarding, Health & Safety, Early Years provision, Equality & Diversity, Behaviour & Attendance – to name a few! We have all been impressed by how engaged your children are within school, how well behaved they are, and how high the quality of the provision is at Meridian. We have many more visits in the works for the rest of the school year.

Want to contact us?

If you have an enquiry for any of the Governors please email the Clerk, Mrs Barbara Gerding at clerk@meridian.e-sussex.sch.uk in the first instance. The Chair, Miss Kathryn Donkin, can be contacted on chair@meridian.e-sussex.sch.uk.