

Learning for life!

Meridian Newsletter

Term 2

**Monday 2nd November to
Friday 18th December**

Term 3

**Monday 4th January to
Friday 12th February**

www.meridianschool.co.uk



Meridian Community Primary
School and Nursery



@MeridianCPS

Friday

18th

**December
2020**

Dear Parents and Carers

So we've made it! What a busy term we've had and, as always, the children at Meridian have been amazing. They have enjoyed learning lots and I have been so proud of how they have adapted and coped with the changes in school. I have loved seeing lots of smiling faces every morning and seeing the amazing work they have produced.

I really hope that next year things will gradually start to go back to normal but in the meantime I know the whole team at Meridian will continue to work hard to make sure all the children are learning and enjoying school.

Pantomime

The enjoyed watching the pantomime today and it was great to hear lots of "boos" and "behind you" as they joined in! I do hope that if your child was self-isolating at home that they managed to watch this too via the link on Google Classroom.

Thank you

We would all like to thank everyone for their generosity and kindness with gifts and cards this year. You have really spoilt us all and we truly appreciate it.

Christmas Food Vouchers

Thank you to all the parents who have let me know that they have received their food voucher codes and were able to redeem these. If you are still having problems redeeming these, you will now need to contact Huggg directly for support.

I do hope that you all manage to have a good and safe Christmas. Please take care and keep washing those hands!

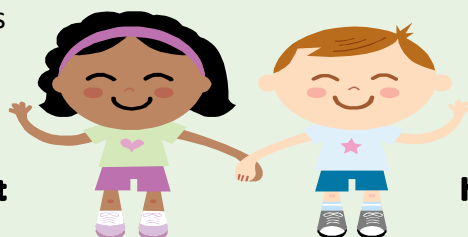
I look forward to seeing you next year – who knows what 2021 will bring . . .

Best wishes

Claire Westcott
Headteacher

strength

respect



kindness

honesty

responsibility

**TERM DATES
2020/2021**

Term 2

Monday 2nd November – Friday 18th
December

Term 3

Monday 4th January – Friday 12th February
**Monday 4th January school closed for staff
training. Children return on Tuesday 5th
January**

**Friday 12th February – school closed for
staff training.**

Term 4

Monday 22nd February – Thursday 1st April

Term 5

Monday 19th April – Friday 28th May

Term 6

Monday 7th June – Friday 23rd July

**PLEASE NOTE NOT ALL INSET DAYS HAVE
BEEN ALLOCATED YET**

IMPORTANT DATES

09.12 School Christmas Lunch
10.12 Parent Council meeting
11.12 Santa Day
18.12 End of term 3

04.01 INSET day – school closed for children

09.02 Parents Evening

10.02 Parents Evening

12.02 INSET day – school closed for children

01.04 End of term 4

School Uniform Reminder

I am noticing that we are starting getting increasing numbers of children with dyed hair coming into school.

Please can I remind everyone that our school uniform policy states: **Hair – All long hair needs to be tied back. All hair should be of natural colour. Extreme haircuts, such as mohicans and shaved patterns/images, and dyed hair are not considered appropriate for school.**

In case you missed the notification earlier today:

Communication at Meridian

Please can I remind you that if you have a concern, a worry or even a complaint that you contact the school directly rather than ask another parent/carer to be a spokesperson to speak on your behalf or on behalf of a group.

We want to hear from you so that we can help you and communicate directly with you – we can't do that through a third party. I know that this year it has been harder for parents to get to know the teachers – I know the teachers have missed getting to know you too.

We have year group e-mails that you can use to get in touch. You can contact the school office and ask for a phone call from the teacher or even leave a message with someone outside in the mornings that we can pass on to teachers. Mr. Doody and I are around most mornings on the gates so please do speak to one of us and we can advise you what to do next.

All the team at Meridian want the same thing as you – that you children are safe, happy and learning in school.

I know that most classes or year groups have parents WhatsApp groups and I think this is great for you to all support each other and share information. However, if someone posts a concern or an issue, please can I ask you to encourage this parent/carer to get in touch with the school so that we can help.

Finally – we have received some lovely messages from parents and carers about the school and the staff team. We have been sharing these with staff and it has made a real difference to our morale. So thank you to everyone who has taken the time to communicate with us in this way too. We are very lucky to have such a kind and supportive parent/carer community.

What happens if a child has a positive COVID -19 test result in the Christmas break?

Was the positive test result received after 3.30pm on Friday 18th December or any time on Saturday 19th or Sunday 20th December?

Yes

No

Contact the school via office@meridian.e-sussex.sch.uk

This email will be checked 9am – 10 am and 4pm – 5pm on 19th and 20th December.

The school will contact DfE helpline, Public Health England and East Sussex County Council for advice.

On the advice of Public Health and East Sussex County Council, parents will be informed via school app if children and households will need to self-isolate.

A letter will be sent to appropriate year groups to confirm the decision

Was the positive test result received between Monday 21st December and Thursday 24th December?

Yes

No

Contact NHS Test and Trace to inform them that your child attends Meridian Community Primary School and Nursery.




Please contact NHS Test and Trace and follow their advice

NHS Test and Trace will contact the school and advise of next steps and if the advice is to contact parents, parents will be informed via the school app if children and households will need to self-isolate

Attendance

Excellent attendance at school is so important so that children do not miss the vital teaching and learning that takes place every day in class and do not fall behind.

Each week we celebrate the class with the best attendance

WHAT IS GOOD ATTENDANCE?					
190 days	180 days	178 days	163 days	161 days	143 days
100%	95%	94%	86%	85%	75%
Good		Worrying		Serious Concern	
					
Only 1-2 day missed per term		Between 3-8 days missed per term		More than 9 days missed per term	

Don't forget – if your child is off school you need to send in a written note on the day they return so that we can consider changing the registration code to an authorised absence. Please note a reason of "ill" or "unwell" is not acceptable.

For more information about our attendance policy and procedures, please visit our website <http://www.meridianschool.co.uk/about-us/policies>

Best Attendance this term:

Week 1 – 6H – 100% - SPECTACULAR!

Week 2 – 3B – 100% - FANTASTIC!

Week 3 – 6dP – 99.5% - AMAZING!

Week 4 – 4Y – 100% - WONDERFUL!

Week 5 – RE and 3B – 99.6% - WOW!

Week 6 – 2M – 99.6% - AMAZING!

Week 7 – 3B – 99.1% - FANTASTIC

The class with the best attendance this term is 2M – CONGRATULATIONS!

Attendance this term		
RW – 96.4%	3B – 98.6%	6RD – 96.9%
RE – 98.4%	4PS – 95.6%	6H – 96.0%
1HS – 96.2%	4Y – 97.6%	
1T – 96.6%	4M – 94.9%	
2P – 97.9%	5B – 95.4%	
2M – 98.7%	5P – 97.0%	
3D – 96.6%	6dP – 97.4%	

Whole school attendance Term 2 is 96.9%. **This is one our best attendance figures!** Thank you so much to all the parents and carers for supporting excellent attendance at Meridian

Thank you for your support with attendance!

ATTENDANCE
 **MATTERS**
 every school day counts.