

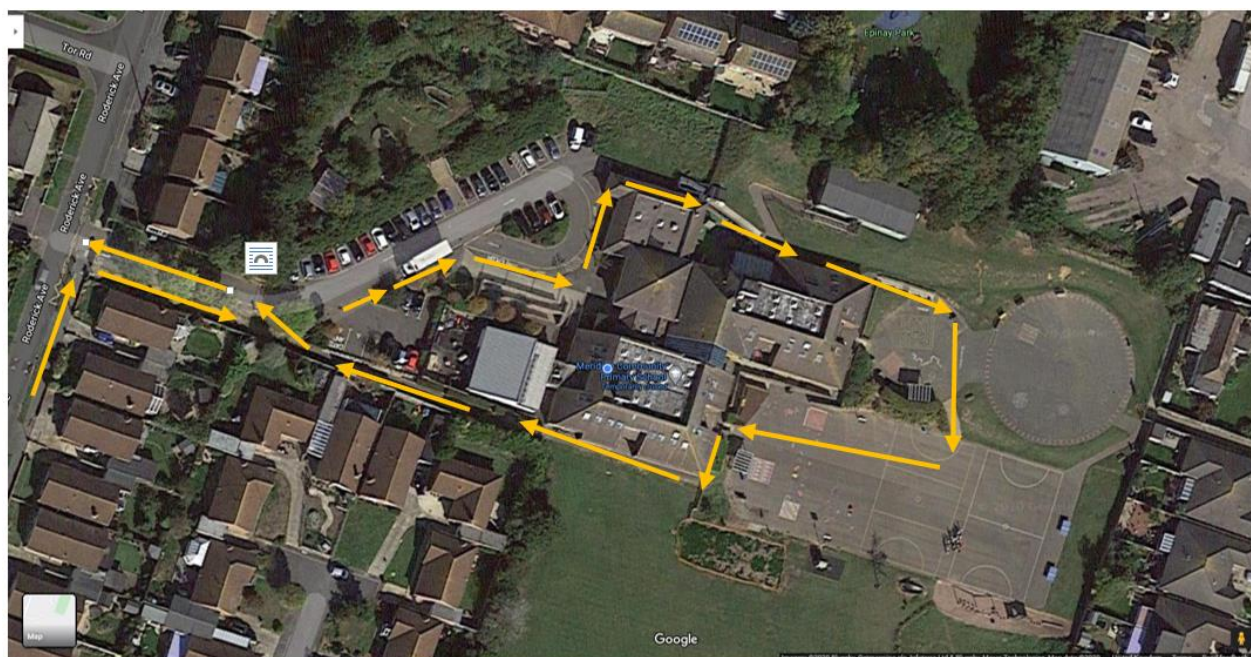
Thursday 28<sup>th</sup> May 2020

**Re: Coronavirus Covid 19 – UPDATE – School Re-opening ONE WAY SYSTEM**

Dear Parents and Carers,

I hope you are all well.

As promised last week, here is a map showing the one-way system for entering and exiting the school site.



You will remember from my previous letter that the gate at the back of the school site, accessed via **Cripps Avenue**, will be **closed** so the only entry will be via the front entrance on Roderick Avenue.

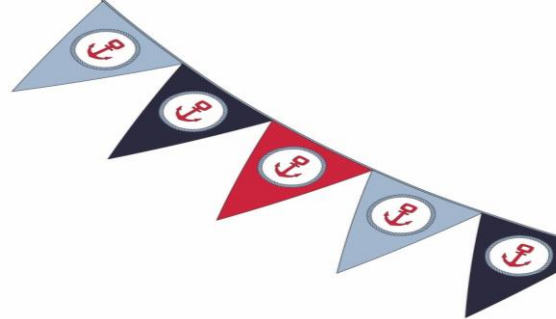
Here is the one-way system explained:

1. If there is a queue, you will need to queue on Roderick Avenue (going up the hill)
2. Enter the school through the small gate and pathway (please do not walk on the driveway as this is where people will be exiting)
3. Follow the small path around and past the entrance to the smaller car park with the disabled spaces
4. Keeping following the path around and past the hall and Annexe building
5. The Reception gate will be open.
6. Walk along the pathway past Reception and mobile classrooms.

**Headteacher - Claire Westcott**  
Roderick Avenue North, Peacehaven  
East Sussex BN10 8BZ  
**Telephone:** 01273 584212  
**e-mail:** [office@meridian.e-sussex.sch.uk](mailto:office@meridian.e-sussex.sch.uk)  
**web:** [www.meridianschool.co.uk](http://www.meridianschool.co.uk)







7. Walk down the ramp on to the small playground
8. Walk across the small playground and down the pathway on to the large playground
9. Walk across the large playground and up the steps by the shelter
10. Turn immediately left and around the school building, following the pathway
11. Follow the pathway through the gate and past the Nursery building
12. When this pathway meets the entrance pathway, people entering have right of way, so wait until it is safe to walk across the path and up onto the driveway
13. Exit the school site via the driveway and the large wooden gates

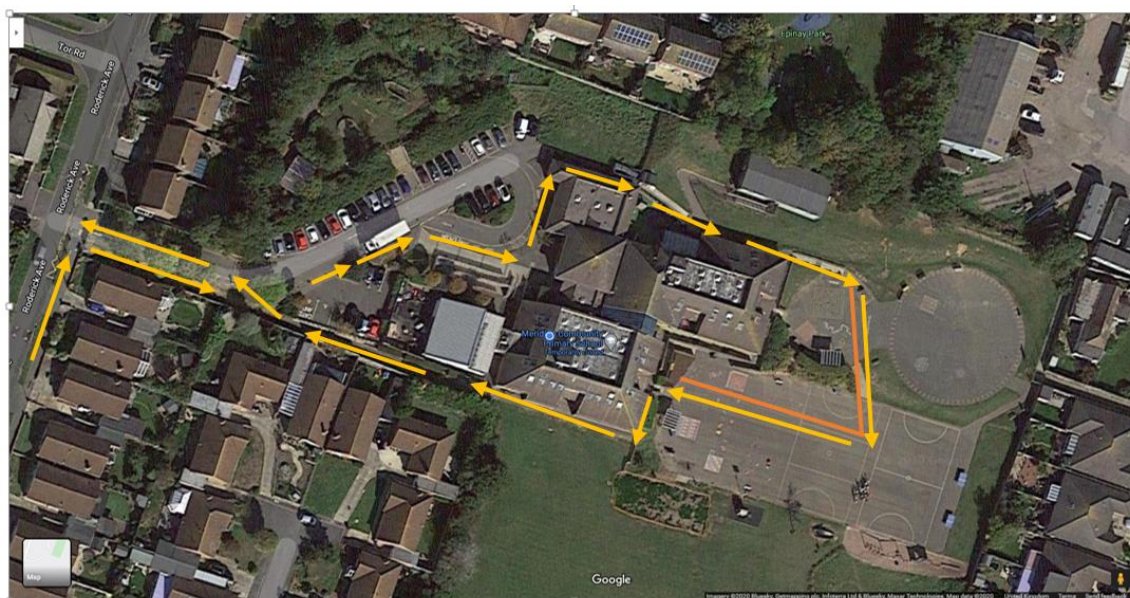
### DROP OFF

**If you are dropping more than one child off, you will need to exit once you have dropped one child off and then start again for the different staggered times.**

Year 6 children can walk to school by themselves however if we see any of them not following these strict social distancing rules, we will ask you to accompany them in future.

The Government guidance encourages parents to have only one parent/carer dropping off and picking up to minimise the number of adults on the school site. Please, wherever possible, I would encourage parents to do this and support the school in keeping everyone safe. If you are bringing a toddler with you for drop off, they will need to stay with you at all times and not run around to support social distancing

### PICK UP



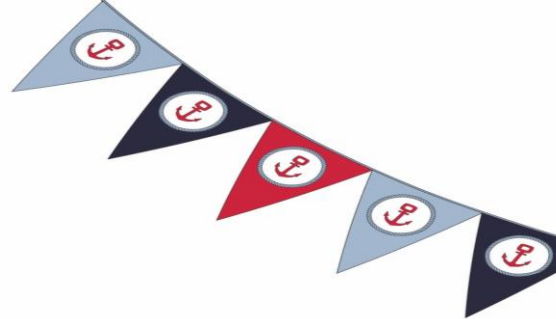
**Headteacher - Claire Westcott**  
Roderick Avenue North, Peacehaven  
East Sussex BN10 8BZ  
**Telephone:** 01273 584212  
**e-mail:** [office@meridian.e-sussex.sch.uk](mailto:office@meridian.e-sussex.sch.uk)  
**web:** [www.meridianschool.co.uk](http://www.meridianschool.co.uk)





# MERIDIAN COMMUNITY PRIMARY SCHOOL AND NURSERY

Learning for Life

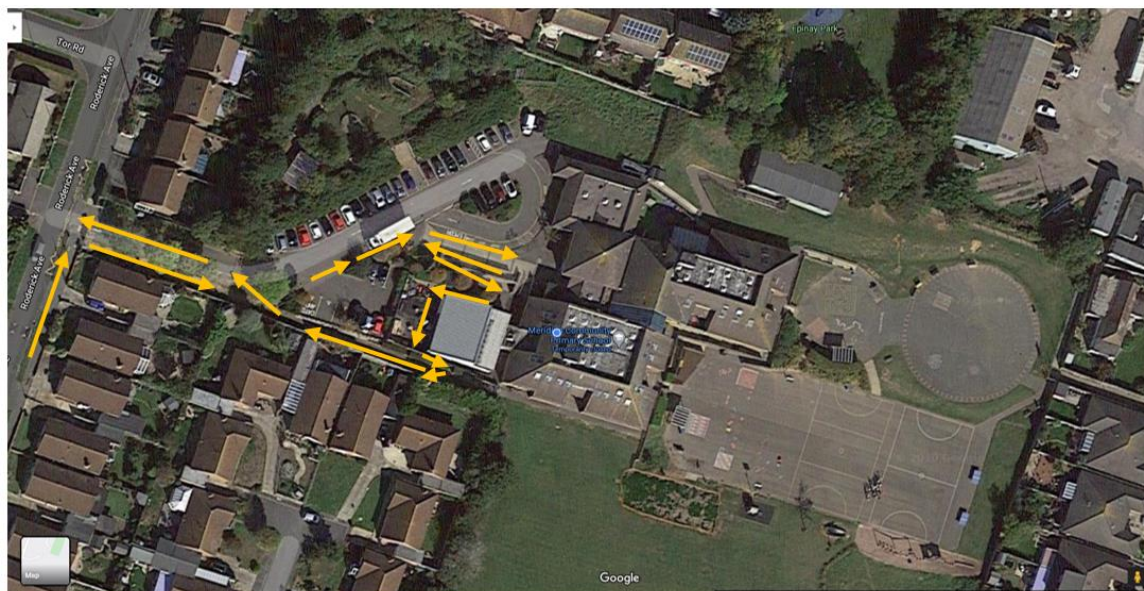


The one-way system will continue to operate at pick up times too. The only difference is that you will need to wait behind the **cones** which will be approximately where the **orange lines** are shown above.

If you are waiting for more than one child, you are able to wait in these areas until you have collected all your children. **All children (including toddlers) will need to wait next to parents and not run around mixing with others. Please respect everyone's social distancing space. The play equipment and field are strictly out of bounds for all children at the end of the day.**

Once you have collected your children, you will need to exit via the one-way system.

## NURSERY



For Nursery families, you will need to follow the one-way system and then:

1. Turn right and follow the ramp down by the Nursery building
2. Walk through the usual wooden gate
3. Drop off children in the play area – you won't be able to access the building
4. Walk across the play area and out of the smaller wooden gate
5. Join the exit pathway when it is safe to do so.

This system for the Nursery will apply for both drop off and pick up.

I appreciate that this is a lot to take in and I do hope that the maps help. At our Parent Council meeting yesterday it was suggested that the school produces a simple video to show parents and children the route to

**Headteacher - Claire Westcott**

Roderick Avenue North, Peacehaven  
East Sussex BN10 8BZ

**Telephone:** 01273 584212

**e-mail:** [office@meridian.e-sussex.sch.uk](mailto:office@meridian.e-sussex.sch.uk)

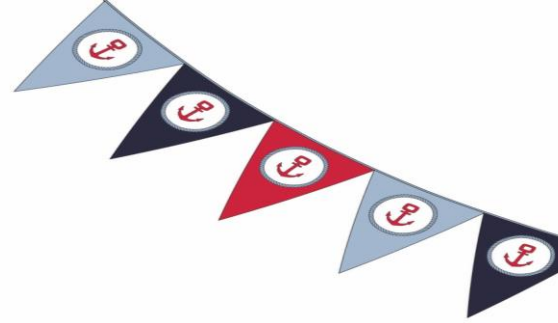
**web:** [www.meridianschool.co.uk](http://www.meridianschool.co.uk)







MERIDIAN COMMUNITY  
PRIMARY SCHOOL  
AND NURSERY  
Learning for Life



help everyone. I will endeavor to do this at the end of this week or the beginning of next week and upload it on to the school website.

As the term progresses, we will review this system and if any changes need to be made, we will let you know.

I am hoping that the social distancing floor stickers and arrows will have been delivered in time for us to put down to support you all. However, I am sure you will appreciate that there is a lot of demand for these resources so delivery times are taking longer than usual.

There will be members of staff available to support you with this whilst we all get used to it.

I will be writing separately to Nursery, Reception, Year 1 and Year 6 parents/carers with more information about the school re-opening arrangements.

Take care and best wishes to everyone

Kind regards

*C. Westcott*

Ms. Claire Westcott  
Headteacher

**Headteacher - Claire Westcott**  
Roderick Avenue North, Peacehaven  
East Sussex BN10 8BZ  
**Telephone:** 01273 584212  
**e-mail:** [office@meridian.e-sussex.sch.uk](mailto:office@meridian.e-sussex.sch.uk)  
**web:** [www.meridianschool.co.uk](http://www.meridianschool.co.uk)

