

Learning for life!

Meridian Newsletter

Term 3

**Tuesday 2nd January –
Friday 9th February**

Term 4

**Monday 19th February –
Thursday 28th March**

www.meridianschool.co.uk



Meridian Community Primary
School and Nursery



@MeridianCPS

**Friday
2nd**

**February
2024**

HEADTEACHER UPDATE

Dear Parents and Carers

I hope you are all well – January is over now and spring is getting closer and closer!

Parents' Evening

It was lovely to see so many of you at Parents' Evenings this week. You should have received your second progress report of the year to inform you of how your child is doing in class, including their attitude to learning, progress and behaviour. This is such an important way of teachers sharing your child's successes and what they need to do next, including advice for how you can support at home. If you were not able to attend, you will receive this report soon. The next progress information you will get is in July when you receive the final end of year report.

Children's language

We have had concerns raised by a few parents at some of the language that is being used by our Year 5 and 6 children when they are walking home on their own. We have spoken to them in assembly today about how our school values need to be reflected whenever they are wearing their school uniform, including walking to and from school. Please can you remind your children about the not swearing or using inappropriate language if they are coming to school independently.

Homophobic language

We have had a few issues in school where children have been using the word 'gay' as an insult. You may be aware that this would be considered a hate incident and in school we have to report any homophobic hate incidences to the Governors. Please can you support the school by reminding children if you hear them using this language, that this is inappropriate and can lead to serious consequences.

Nursery Open Days

If you have any friends or family that would be interested in our wonderful Meridian Nursery, please do let them know about our Nursery Open Days which are taking place on Friday 1st March, Friday 8th March and Friday 15th March – all from 2pm – 2.30pm.

A flyer went out this week!

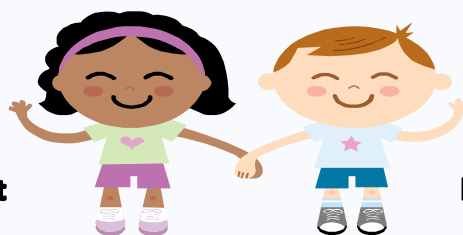
Have a lovely weekend!

C. Westcott

Claire Westcott
Headteacher

strength

respect



kindness

honesty

responsibility

IMPORTANT INFORMATION

TERM DATES 2023/2024

Term 3

Tuesday 2nd January – Friday 9th February

**Tuesday 2nd January – school closed to children
for staff training**

Wednesday 3rd January – children back to school

**Tuesday 6th February – school closed to children
for staff training**

Term 4

Monday 19th February – Thursday 28th March

Term 5

Monday 15th April – Friday 24th May

Term 6

Monday 3rd June to Tuesday 23rd July

All INSET days are now in place

KEY DATES

- 02.01** School closed for staff training
- 03.01** Back to school for all children
Values Day in school
- 26.01** Parent Coffee Morning – 9am in
Annexe/Music Room
- 30.01** Parents Evening – 3.30pm – 6pm
- 01.02** Parents Evening – 4pm – 7pm
- 02.02** Parent Forum – 2pm in
Annexe/Music Room
- 06.02** School closed for staff training
- 07.02** Children back to school
- 09.02** End of term 3

- 19.02** Children back to school
- 07.03** World Book Day
- 15.03** Red Nose Day
- 22.03** Parent Coffee Morning 9am
Parent Forum 2pm
- 28.03** End of term 4

More dates will be added over the course of
this term.

NHS
East Sussex
School Health Service



Aged 11 to 19?

Or parent/carer of a
child or young person
aged 5 to 19 years old?

**Speak to a
school nurse
in person.**

Tuesdays and Thursdays
10am to 3 pm
and 6 to 9pm

Click <https://nhs.uk/east-sussex-school-health>
or text
07507 332473 anytime.

**East Sussex
School
Health**

Service provided by Kent Community Health NHS Foundation Trust

**Confidential, private
and here for you.**

KEEPING CHILDREN SAFE Safeguarding at Meridian

If you have a safeguarding concern about a
child that attends Meridian, please do contact
one of the Designated Safeguarding Leads:

Mrs. Lucy Newth

Designated Safeguarding Lead

Ms. Claire Westcott

Deputy Designated Safeguarding Lead

Mr. Matt Doody

Deputy Designated Safeguarding Lead

Miss. Laura Miles

Deputy Designated Safeguarding Lead

During the school holidays, please contact:

Single Point of Advice (SPOA) on 01323 464222

If you have an immediate or emergency
concern about a child's safety, please call 999.
The NSPCC has advice about this on their
website [here](https://www.nspcc.org.uk).

MERIDIAN NOTICEBOARD

PARENT COFFEE MORNING CHANGE OF DATE

Thank you to those parents who attended our Parent Coffee morning all about sleep.

Our next Coffee Morning date has changed and is now on **Friday 22nd March**. The theme of this coffee morning will be looking at **low mood**.

This coffee morning will be led by one of our Mental Health Support Team and our Behaviour and Pastoral Support Assistants, Mrs. Kirton and Mrs. Harmer, will also be there. It will take place in our Annexe/Music Room at 9am.

Everyone is welcome!



PARENT FORUM

Unfortunately no-one came to our Parent Forum today.

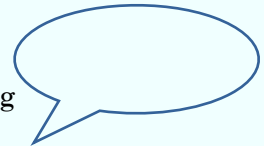
However, we have got another Forum planned for 22nd March at 2pm in the Annexe/Music room.

The theme of this Forum will be about PSHE (Personal, Social and Health Education).

I will also be available, as always, to answer any general questions at Meridian.



We look forward to seeing you in March!



Water Bottles in school

Please can we remind all parents that water bottles in school need to contain **water only**. No fruit squashes or fruit juice please!
Thank you for your support with this. 😊



PTFA

We had a really lovely PTFA meeting on 23rd January and we now have a **new Chair of the PTFA**. **Emma Budd** is now the Chair – congratulations and thank you to Emma for stepping up to this new role. A huge thank you to **Louise Clarkson** who has been the Chair for several years now and done an amazing job of support the fundraising events at school – luckily Louise is not stepping down completely from the PTFA and has taken on the role of **treasurer**. **Lewis Brown**, who has been our treasurer for several years too, stepped down as his daughter is now at secondary school! A huge thank you to Lewis for his support over the years and indeed continuing to support the PTFA for the last few months until Louise took over the role. **Jenny Brown** is now the **Vice Chair** and **Kirsten Wedel-Jenkins** remains our secretary. **Zoe Wyse** and **Kerry Gilbert** are now also on the **PTFA committee**, as am I as Headteacher! We are a really friendly group and we are always very happy for new parents to join our committee – the more the merrier!

Upcoming PTFA Events

Friday 8th March – doughnut and school uniform sale – Music room from 3.15pm
Friday 22nd March – PTFA Social Event – Quiz Night - TBC
Friday 17th May – Summer Disco
July – Summer Sizzler – date TBC

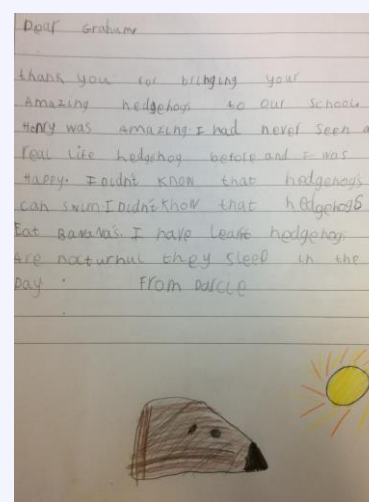
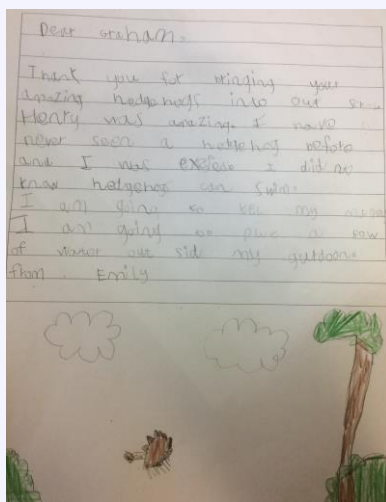
Next PTFA meeting

19th March at 7pm (either at school or online)

LEARNING AT MERIDIAN

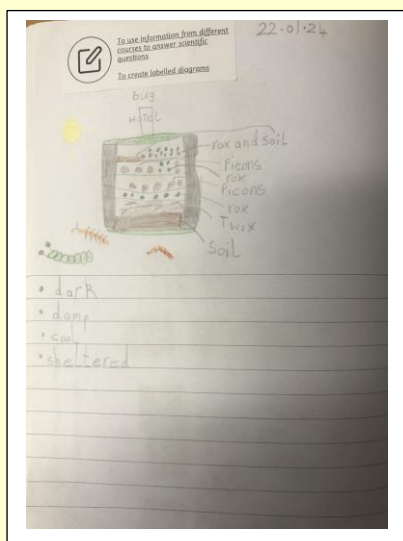
Hedgehogs visit the school!

On 19th January, Graham from a local Hedgehog Rescue Centre visited the children in Year 1 and Year 2 to support their learning about Woodlands. The children learnt so many interesting facts and were able to meet Harry and Henry the hedgehogs! The children then wrote some wonderful thank you letters to Graham and Graham replied "I thoroughly enjoyed my visit to Meridian Primary School. The children in each class were amazing, very well-behaved and asked some incredible questions! Please pass my thanks on to them all. I think Harry and Henry enjoyed themselves too!" **Look at these wonderful letters that Year 1 wrote!**

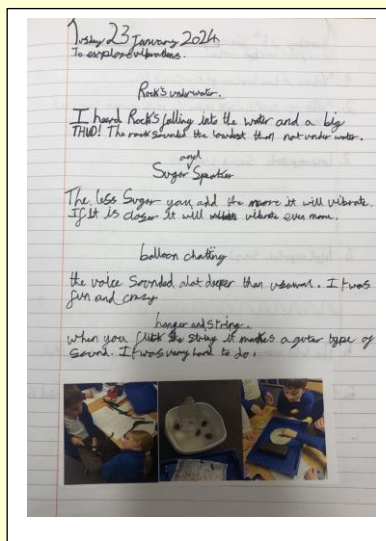


Science at Meridian

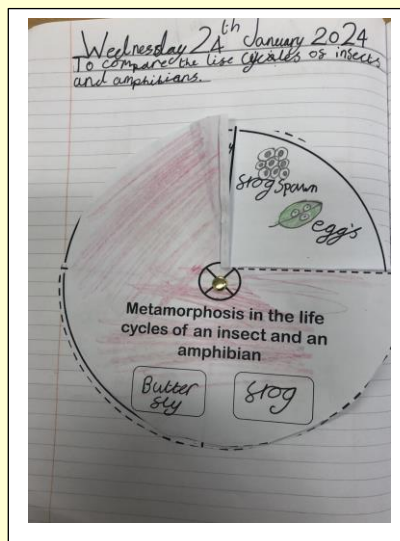
Did you know that at Meridian, the children in Year 1 – Year 6 all have a weekly science lesson as part of our curriculum offer. Children in Nursery and Reception learn about science throughout the year in a variety of different ways, including exploring and discovering in the learning environment.



Year 2



Year 4



Year 5

For more information about how and what we teach in science, visit our school website [here](#).

PERSONAL DEVELOPMENT AT MERIDIAN

Personal Social and Health Education (PSHE)

In our PSHE lessons this term, the children have been learning about Dreams and Goals and how they can achieve these.

Here is what each year group have been learning about as part of this topic:

- Nursery - playing and sharing together
- Reception - challenges and perseverance
- Year 1 - setting goals
- Year 2 - achieving realistic goals
- Year 3 - difficult challenges and achieving success
- Year 4 - hopes and dreams
- Year 5 - future dreams
- Year 6 - personal learning goals in and out of school



The concepts of not giving up (perseverance) and overcoming challenges (resilience) are revisited throughout this unit of learning.

Did you know, that children also practise mindfulness as part of their PSHE lessons?

PLAY AT MERIDIAN

Wonderful Playtimes!

Children still need to wear their wellies at break time and lunch time whilst the field is still muddy. In our assemblies we celebrate brilliant play with all the children. Don't forget to keep those donations coming in!

The children particularly love wheeled items, such as old buggies and suitcases – so if you are having a clear out, please do think of us!



ATTENDANCE AT MERIDIAN

Good attendance at school is so important so that children do not miss out on their learning. Did you know that when teachers plan their lessons, each lesson builds on the previous one? So if a child misses 1 or 2 lessons a week, they will find the work much harder as they will be developing gaps in their knowledge.

If you are worried about your child's attendance or would like some support with this, please do make an appointment with one of our Pastoral Team, Mrs. Kirton or Mrs. Harmer.

Whole School Attendance

94.2% (our target is 96%)

Best Attendance this term

Week 1: 5BPS – 99.5% 😊😊

Week 2: 3YM – 96.8% 😊



We are currently moving over to a new data management system so this information will be updated as soon as possible!

Our Attendance Team

Our Attendance Team works hard to support excellent attendance in school in a variety of different ways.

Mrs. Lucy Newth is our Attendance Leader and she oversees all the different strategies we have in place to support children's attendance.

Mrs. Emma Harmer and Mrs. Gemma Kirton are our Behaviour and Pastoral Support Assistants who work with children and their families who are starting to struggle with attendance, offering support and advice about improving attendance.

Mrs. Jacqui Dray is our Attendance and Admission Officer who works in our school office, monitoring daily absences, checking children's attendance and making safeguarding calls if we have not heard from parents if their child is absent.

Mrs. Samaira Sciberras-Clark is our Education Welfare Officer who works with families where attendance is becoming a concern to offer support and guidance to improve children's attendance.

Don't Forget!

It's really important that you **call us every day** that your child is absent from school – **please do not send us an email.**

When your child returns to school, you need to send in a **signed note confirming your child's absence** – otherwise we are not able to authorise this absence.