

# Learning for life!



## Meridian Newsletter

### Term 6

**Monday 5<sup>th</sup> June – Friday  
21<sup>st</sup> July**

### Term 1

**Friday 1<sup>st</sup> September –  
Friday 20<sup>th</sup> October**

[www.meridianschool.co.uk](http://www.meridianschool.co.uk)



**Meridian Community Primary  
School and Nursery**



**@MeridianCPS**

**Friday  
21<sup>st</sup>  
July  
2023**

Dear Parents and Carers

Well, another school year has come to an end – and what a busy and wonderful year we have had! The children have learnt so much – from the Romans to the Victorians, from water to rivers to coasts, many important people and places! And much, much more . . .

I would like to take this opportunity to thank you all for your support and positivity about everything we do at Meridian – I really appreciate this and know all the team do as well.

I do hope you have a wonderful summer holiday and look forward to seeing everyone back in school in September to do it all again!

### **Goodbye and Good Luck!**

We are saying goodbye and good luck to a few members of staff this year – Miss. Duffy, Miss. Broadbent, Miss. Whittall, Mr. Coffey and Mrs. Aicken. I know you will join me in wishing them all well for the future.

### **Maternity Leave**

Miss. Smiles will be going on maternity leave in September – we wish her all the best and can't wait to meet the new baby! Take care and good luck!

### **Welcome to new staff**

We will have some new people joining us in September – Miss. Timms (Y2), Miss. Sanderson (Y3) and Miss. Young (Y3 – Miss Smile's maternity cover) – I know they are looking forward to joining us and meeting you all.

### **Year 6**

And finally, good luck and best wishes to our wonderful Year 6 children – they have been such a great year group and their final musical performance to their families and friends was absolutely wonderful! I wish them all the best as they move on to their new secondary schools. Year 6, remember how brilliant you all are – your new schools are very lucky to be getting you!

Take care and best wishes

*C. Westcott*

Claire Westcott  
Headteacher

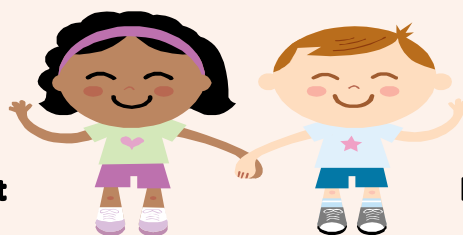
**strength**

**kindness**

**respect**

**honesty**

**responsibility**



## TERM DATES 2023/2024

### Term 1

Friday 1<sup>st</sup> September – Friday 20<sup>th</sup> October

**01.09 and 04.09 – school closed for staff training**

**CHILDREN BACK TO SCHOOL ON TUESDAY 5<sup>TH</sup>**

### **SEPTEMBER**

**20.10 – school closed for staff training**

### Term 2

Monday 30<sup>th</sup> October – Friday 15<sup>th</sup> December

### Term 3

Tuesday 2<sup>nd</sup> January – Friday 9<sup>th</sup> February

### Term 4

Monday 19<sup>th</sup> February – Thursday 28<sup>th</sup> March

### Term 5

Monday 15<sup>th</sup> April – Friday 24<sup>th</sup> May

### Term 6

Monday 3<sup>rd</sup> June to Tuesday 23<sup>rd</sup> July

**Please note that not all INSET days have been set for 2023/2024**

## IMPORTANT DATES

**01.09** School closed for staff training

**04.09** School closed for staff training

**05.09** Children back to school  
Reception Group 1 starts

**07.09** Reception Group 2 starts

**11.09** Reception Group 3 starts

Y1 parents – Meet the teacher

**12.09** Y2 parents – Meet the teacher

**13.09** Reception Group 4 starts  
Y3 parents – Meet the teacher

**14.09** Y4 parents – Meet the teacher

**15.09** Reception Group 5 starts  
Y5 parents – Meet the teacher

**19.09** Y6 parents – Meet the teacher

**10.10** Parents Evening (3.30 – 6.00)

**12.10** Parents Evening (4.00 – 7.00)

**20.10** School closed for staff training

### **End of term 1**

**07.11** New Reception 2024 parents Open Day – 9.30am and 1.30pm

**11.12** Reception Christmas Performance to parents – 9.15 and 1.20

**12.12** Years 1 and 2 Christmas Performance to parents – 9.15, 10.45, 1.20

**13.12** Years 3 and 4 Christmas Performance to parents – 9.15, 10.45, 1.20

**14.12** Years 5 and 6 Christmas Performance to parents – 9.15, 10.45, 1.20

Parent Forum dates TBC

Parent Coffee Mornings dates TBC

Nursery Christmas Performance TBC

## Safeguarding at Meridian

If you have a safeguarding concern about a child that attends Meridian, please do contact one of the Designated Safeguarding Leads:

**Mrs. Lucy Newth**

Designated Safeguarding Lead

**Ms. Claire Westcott**

Deputy Designated Safeguarding Lead

**Mr. Matt Doody**

Deputy Designated Safeguarding Lead

**Miss. Laura Miles**

Deputy Designated Safeguarding Lead

**During the school holidays, please contact:**

Single Point of Advice (SPOA) on 01323 464222

If you have an immediate or emergency concern about a child's safety, please call 999. The NSPCC has advice about this on their website [here](https://www.nspcc.org.uk).



**NHS**  
East Sussex  
School Health Service

**Aged 11 to 19?**  
Or parent/carer of a child or young person aged 5 to 19 years old?

**Speak to a school nurse in person.**  
Tuesdays and Thursdays  
10am to 3 pm  
and 6 to 9pm

**Click** <https://nhs.uk/east-sussex-school-health>  
or text  
07507 332473 anytime.

**East Sussex School Health**

**Confidential, private and here for you.**

Service provided by Kent Community Health NHS Foundation Trust

## Parent Questionnaire

Thank you so much to all the parents and carers who took the time to respond to our Parent Questionnaire recently. We had 103 responses and here are the results.

- 96% said their child is happy at school
- 98% said their child feels safe at school
- 91% feel the school makes sure its pupils are well behaved
- The overwhelming majority of respondents said their child had not been bullied. Where parents felt there were incidents of bullying, 70% felt this had been dealt with quickly and effectively.
- 91% said the school makes them aware of what their child will be learning during the year
- When concerns have been raised with the school, 92% said they have been dealt with properly. 40% of respondents had not raised any concerns.
- 93% of families with children who are SEND felt the school gives them the support they need to succeed.
- 97% said the school has high expectations of my child
- 93% said their child does well at this school
- 85% said the school lets me know how my child is doing
- 97% said there is a good range of subjects available to their child at this school
- 83% said their child can take part in clubs and activities at this school
- 86% said the school supports their child's wider personal development
- 96% said they would recommend this school to another parent

These results are really positive and will also help shape our next steps to ensure that Meridian Community Primary School and Nursery is the best it can be.

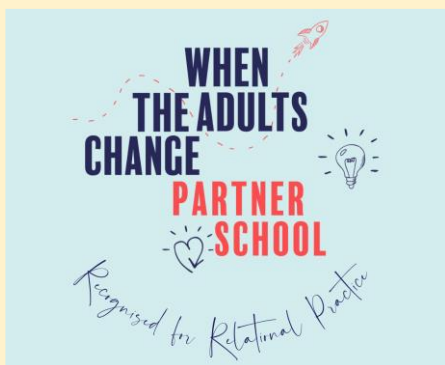
I will go into a bit more detail about some of areas that we asked about in this questionnaire in this newsletter – see below.

Going forward, I will also make sure that my newsletters include information about these areas so that all parents and carers are well-informed. I am also investigating a new style newsletter that I can use which will hopefully help with this too!

Once again, thank you so much for taking the time to give us this valuable feedback.

### Behaviour in school

Did you know that our excellent practice at supporting and ensuring that children behave well in school has been acknowledged through us becoming a Partner School for Paul Dix and his 'When the Adults Change' behaviour programme? It was a real honour to be selected for this and we regularly attend meetings to share our good practice!



In our recent Safeguarding Review it was commented:

"High expectations have been set, and provision has been secured, to support children's behaviour to ensure the school provides a safe and calm learning environment for all."



## Keeping children safe

It is lovely to hear that 98% of you say that your children feel safe in school.

We recently had a **Safeguarding Review** from the Local Authority (something that all schools across the County are encouraged to have) and we received the **highest possible outcome** – which is fantastic news. The outcome given is that **“Safeguarding provision at this school is effective”** – which I know doesn’t sound very exciting, but this is the phrase they have to use for the highest possible outcome! Here are some of the positive things the reviewers said:

- “Leaders work collaboratively to create an authentic whole school approach to safeguarding”
- “The start and end of the school day were observed to be calm and well managed with routines embedded.”
- “Break times at Meridian have been thoughtfully organised”
- “Play equipment and areas on the playground and field are well supervised. Staff and pupils are proud of what is on offer. The reviewers observed happy, purposeful play sessions that were actively supervised.”
- “Arrangements for first aid and pupils with ongoing medical conditions are robust and integrated with other school systems ensuring that pupils’ needs are well known to staff and considered carefully by the safeguarding and pastoral teams”
- “Curriculum planning ensures that pupils receive a consistent message about how to keep themselves safe or raise concerns when they arise.”
- “The sample of pupil voice gathered during the review demonstrates children’s positive attitudes about school, their confidence that school is a safe place, and their understanding of different ways to keep themselves safe.”

It was really wonderful to get validation that our safeguarding practices are really strong!

## Learning at Meridian

At Meridian, we provide parents with information about what children will be learning through our website and through topic overviews that share everything you need to know about upcoming learning three times a year. Over the summer holidays, I will be updating the website further to ensure there is comprehensive information for you to access about our wonderful curriculum, all the subjects we teach and what each year group will be learning over the year and each term. So watch this space!



I also always inform parents of what the children will be learning about three times a year in my newsletters so that you are aware of upcoming studies and topics!

Don't forget to read our wonderful music newsletters where you can find out about the music the children will be listening to that week!

We also have Parent Forum meetings each term where we share the learning that happens at Meridian – this year we shared learning in our Forest School, Phonics, Online Safety (although unfortunately no-one attended) and our Curriculum. We have plans to continue to offer this opportunity to parents next year and if there is anything else you would like to find out about regarding the learning that takes place at Meridian, please do let us know!

## Your child's progress – how they are doing in school

As part of our commitment to ensuring you know how your child is doing in school, we send out three reports to parents and carers every year. One mini report goes out in the Autumn term and one mini report goes out in the Spring term. As a school, we are not required to send out these written mini reports, but following feedback a few years ago, we developed these as an additional way for parents/carers to find out how children are doing in terms of their learning and behaviour. This information is shared at the same time as parents' evenings, which are an opportunity to meet with your child's teacher and find out how they are getting along. At these meetings, teachers sometimes share ideas and strategies of how you can help your children at home too. We strongly encourage you all to attend these meetings so that we can work in partnership to support your children's progress in school. If in the unlikely event you are not able to attend, we will send this mini report home for you to read.



At the end of the school year, it is our statutory duty to send out an end of year report to all parents and carers so that you can read about their successes and areas for improvement. You will have received these last week. And I enjoyed reading every single report and signing them too!

You also have the Year Group email addresses which you can use to contact class teachers if you would like to arrange a meeting to find out more about how your child is doing in school and most teachers are available after school for a quick chat too. Obviously this needs to be managed carefully by teachers and parents so that the workload of my busy teachers is not significantly increased, but I know all teachers will be happy to discuss how your child is doing in school.

## Your child's personal development

There are many different ways that we support children's personal development in school. Here are few examples:

- **Personal Development Assemblies** – these happen every week in class through 'Brilliant Schools' who has been working with the school this year. The children love these assemblies that talk about being positive, being resilient and bouncing back when things get tough. Lots of older children have enjoyed reading books linked to this: "Diary of a Brilliant Kid – Top Secret guide to Awesomeness" by Andy Cope, Gavin Oattes and Will Hussey (who will be revisiting Meridian in the new academic year)
- **OPAL** – we are a Platinum Award-Winning OPAL school and lots of other schools come to visit our brilliant playtimes. Excellent Play opportunities are recognised as a great way to support children's mental health and personal development.
- **Forest School** – our wonderful Forest School curriculum has been devised and written by Mr. Legate. Did you know that Forest School is not in the National Curriculum? But we recognised that this provision is an important way to support children's personal development, including positive mental health
- **Thrive** – for some children that are struggling with their emotional and/or mental health, we have Thrive practitioners in school that work with them as part of our commitment to personal development
- **Extra curricular activities** – after school clubs have increased this year with: 2 morning sports clubs; 2 after school sports clubs; 1 after school choir; 2 after school lego clubs; 1 after school karate club. *We are excited to announce that from September we will be launching an after school Art club as well!*
- We have had many **trips and experiences** this year to support children's personal development. Children have visited Brighton Pavilion, Rottingdean, Seaford, Fishbourne Palace, Lewes Castle, Brighton Pier and i360, Sealife Centre, Cuckmere River and Isle of Wight for Y6 residential. They have enjoyed a pantomime and the choir went to Glyndebourne to sing with their singers – and much more!



**I hope this helps you understand some of the many ways we support children's personal development!**



## Good Attendance means...

Being in school at least 97% of the time or 184 to 190 days

### Remember

Your education is important - don't miss out!

#### Did you know?

A two week holiday in term time means that the highest attendance a child can achieve is 94.7%



There are **365** days in a calendar year

**175** days are **not** spent at school\*

\*So there's plenty of time for shopping, holidays and appointments!

#### Did you know?

When pupils attend school they:

- ✓ Can achieve their full potential
- ✓ Have better career prospects
- ✓ Learn how to look after themselves and be healthy
- ✓ Grow in confidence
- ✓ Keep up with work and homework
- ✓ Make new friends

Our overall attendance this year was 93.1%, which is slightly lower than national expectations.

We will continue to monitor and support excellent attendance next year.

Well done to **2M** for having the highest attendance for the **WHOLE YEAR!**

**96.2% - AMAZING!**

**Please help us to ensure that your child has good attendance by ensuring they are in school as much as possible!**

## AMAZING Musical Performances!

A huge thank you to Mr. Mole for planning, organising and supporting the children in their musical performances the last couple of weeks. I was lucky enough to watch all 7 performances and I was blown away by the quality of the children's singing, their enthusiasm to perform to you all and the number of instruments that were played. I had tears in my eyes in every performance at the beautiful singing and the joy on the children's faces when they were playing the instruments.

As I said in at the end, we are so lucky to have a dedicated music teacher so that all children, from nursery to Year 6 have a weekly music lesson. Music is a wonderful way to bring children together and make music together – there really isn't anything better! And, did you know that singing is really good for maintaining positive mental health? So keep up the singing everyone!



## OUR FANTASTIC PTFA

As always, our fantastic PTFA put on a brilliant mini-Summer Sizzler last Friday when the weather prevented us from having the usual event on the field. We made over £800!!!

A huge thank you to all of you that came along and spent your money to raise funds for the school.

And, in particular, a big thank you to Committee members, Sam and Lewis, who have supported the PTFA throughout the time that their children have been at Meridian. Their children are moving on to secondary school now!

We will still have a few committee members left in September but we definitely will need more to ensure the future of the PTFA is secured.

So if you would like to ensure that the PTFA continues for the good of Meridian children, then please do contact the PTFA via their [Facebook](#) page.

We will have a meeting in September where we will be planning future events as well as electing new PTFA members – so please look out for this information and try and come along if you would like to join the PTFA committee!

We look forward to welcoming new people in September!

